

REGULATOR EX

REGULATOR SX

2025 PREVIEW PACK

REGULATORS, MOUNT UP!

THE ALL-MOUNTAIN WORKHORSE IS HERE TO DELIVER FUN ON EVERY TRAIL

We are proud to introduce our all-new eMTB platform, the Regulator! The Regulator is our all-mountain workhorse designed to provide a fun, nimble and responsive ride. No trail is too tame or too gnarly for the dedicated mixed wheel platform providing 150/160mm travel and geometry that promotes agility and playfulness. The Regulator will be the choice for riders looking for a chassis that excels everywhere with the added assistance of a Bosch drive unit. The Regulator will be available with the Bosch CX drive unit for those looking for higher power and longer range, or the Bosch SX drive unit for those who desire a lighter weight eMTB experience more similar to a regular mountain bike. Both bikes share similar form language, with just small differences between them, read on below to learn more!



REGULATOR CX



REGULATOR SX

REGULATOR CX

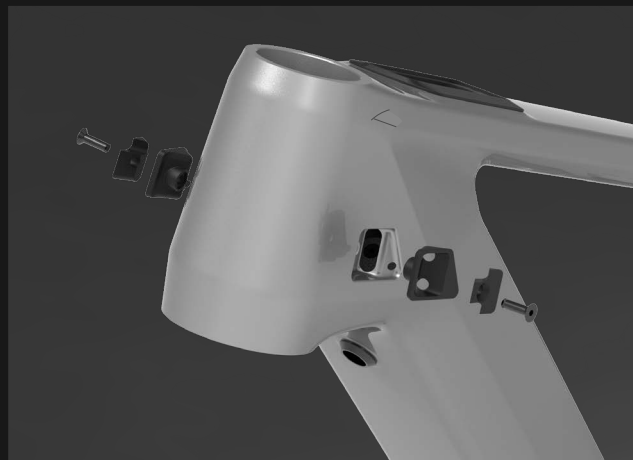
The Bosch Performance Line CX powered Regulator packs 85nm of torque with 600 watts of peak power from the 625wh battery and optional 250wh range extender. The main battery is enclosed in a slim downtube and provides hours of fun, while still allowing users to add the range extender if even longer rides are desired. This combination provides the best range to weight ratio for those who value lighter ride characteristics, with the option to ride all day with the range extender. Giving you the best of both worlds with one of the most reliable, powerful and intuitive motor systems available in the market.



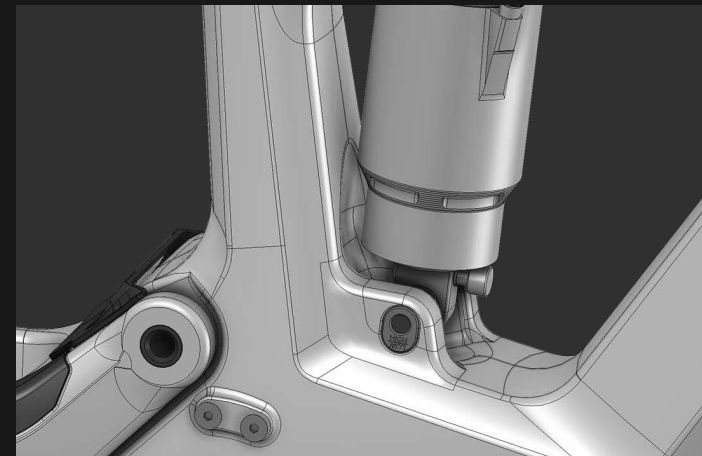
GLACIER WHITE



New Chainstay Protection Design



New Head Tube Cable Routing Ports



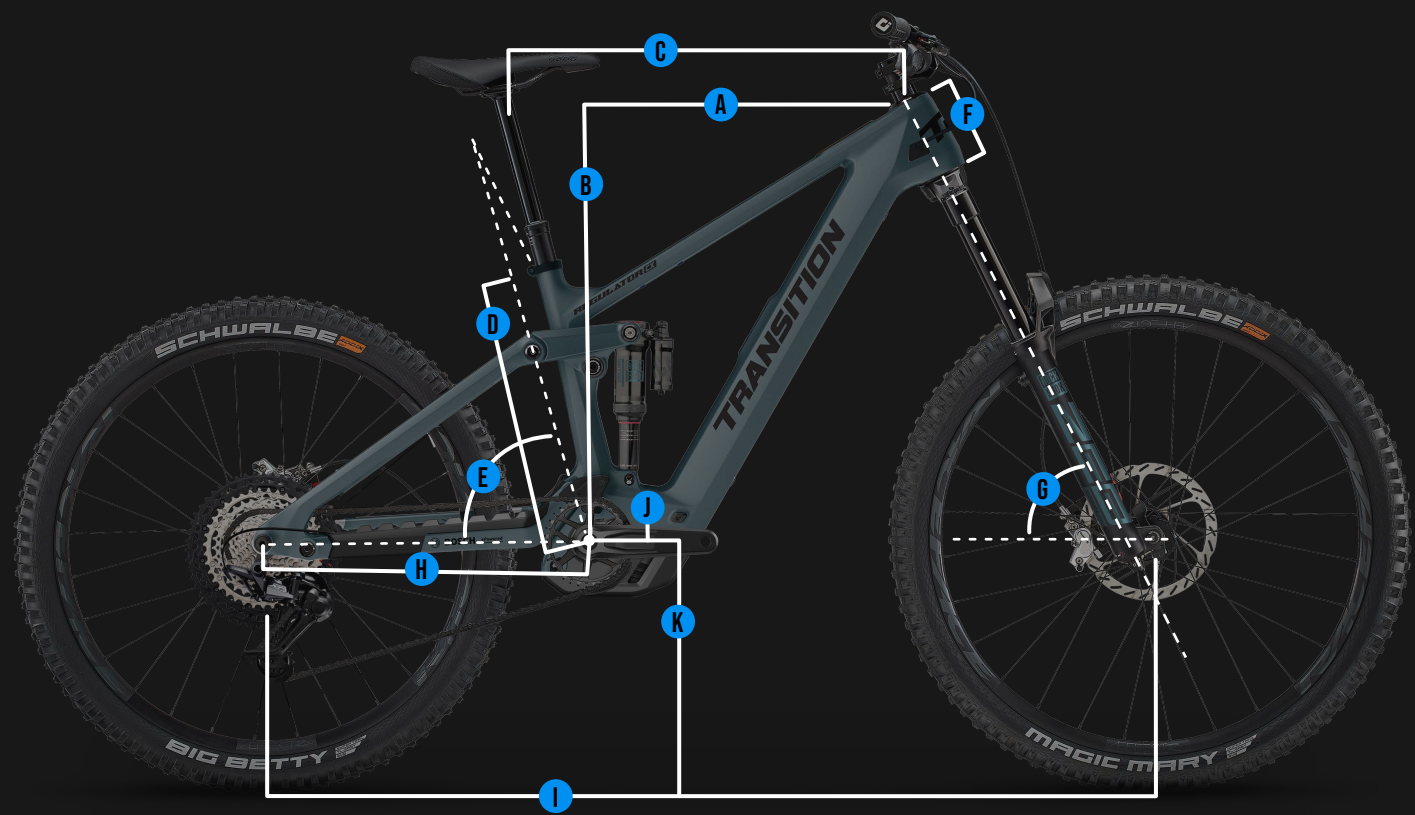
Geo-Adjust Chip At Lower Shock Mount

REGULATOR CX BUILDS

Model	Regulator CX Deore	Regulator CX XT
Color Options	Salish Sea Blue, Glacier White	Salish Sea Blue, Glacier White
Frame	Regulator CX Carbon 150mm	Regulator CX Carbon 150mm
Wheel Size	Mixed	Mixed
Drive Unit	Bosch Performance Line CX	Bosch Performance Line CX
Battery	Bosch Powertube 625wh	Bosch PowerTube 625wh
Display	Bosch System Controller	Bosch System Controller
Assist Switch	Bosch Wireless Mini Remote	Bosch Wireless Mini Remote
Rear Shock	RockShox SuperDeluxe Base (205x60mm)	RockShox SuperDeluxe Ultimate (205x60mm)
Fork	NEW RockShox Domain Gold RC(160mm)	RockShox ZEB Ultimate (160mm)
Headset	FSA No.57E	FSA No.57E
Stem	RaceFace Aefect R (40mm)	ANVL Swage (40mm)
Handlebar	RaceFace Chester 35 SM (780x20) MD/LG/XL (780x35)	OneUp Carbon SM (800x20) MD/LG/XL (800x35)
Grips	ODI Elite Flow Lock-On	ODI Elite Flow Lock-On
Saddle	SDG Bel Air V3	SDG Bel Air V3 LUX
Seatpost	SDG Tellis SM(150mm) MD(170mm) LG(200mm) XL(230mm)	OneUp Dropper Post SM(150mm) MD(190mm) LG(210mm) XL(240mm)
Brakes	Shimano Deore M6120 4 Piston	TRP DH-R EVO
Rotors	Shimano RT66 (203mm)	TRP R1 2.3 (203mm)
Shifter	Shimano Deore M6100 iSpec EV	Shimano XT M8100
Derailleur	Shimano Deore M6100 SGS 12sp	Shimano XT M8100 SGS 12sp
Cassette	Shimano Deore M6100 (10-51t)	Shimano XT M8100 (10-51t)
Chain	Shimano Deore M6100	Shimano XT M8100
Crank	Samox EC39 (150mm)	SRAM S1000 (150mm)
Chainring	E*Thirteen Helix Core Direct Mount (34t)	E*Thirteen Helix Race Direct Mount (34t)
Chainguide	Transition Integrated Top Guide	Transition Integrated Top Guide
Rims	WTB ST i30	DT Swiss H 1900 Spline 30
Spokes	Pillar Straight Gauge	DT Swiss Hybrid 1
Hubs	Novatech D791SB/D902SB	DT Swiss Hybrid 370
Front Tire		NEW Schwalbe Tire (Ultra Soft 2.5)
Rear Tire		NEW Schwalbe Tire (Soft 2.5)
Included	Bosch Charger, Tubeless Valves & Sealant	Bosch Charger, Tubeless Valves & Sealant

REGULATOR CX GEO

GEO	SM HIGH/LOW	MD HIGH/LOW	LG HIGH/LOW	XL HIGH/LOW
A. REACH	425 / 420	455 / 450	480 / 475	510 / 505
B. STACK	623 / 628	632 / 637	641 / 646	651 / 656
C. EFFECTIVE TT LENGTH	551 / 554	583 / 587	610 / 615	643 / 648
D. SEAT TUBE LENGTH	375	400	440	470
E. EFFECTIVE ST ANGLE	78.8 / 78.3	78.5 / 78.0	78.2 / 77.7	77.9 / 77.4
REFERENCE SEAT HEIGHT	600	660	720	780
ACTUAL ST ANGLE	75.0 / 74.5	75.0 / 74.5	75.0 / 74.5	75.0 / 74.5
ST OFFSET AT BB HEIGHT	41	41	41	41
F. HEAD TUBE LENGTH	105	115	125	135
G. HEAD TUBE ANGLE	64.5 / 64.0	64.5 / 64.0	64.5 / 64.0	64.5 / 64.0
H. CHAINSTAY LENGTH	442 / 444	442 / 444	448 / 450	448 / 450
I. WHEELBASE	1201 / 1203	1235 / 1237	1271 / 1273	1305 / 1307
J. BOTTOM BRACKET DROP (FRONT WHEEL)	25 / 20	25 / 20	25 / 20	25 / 20
BOTTOM BRACKET DROP (REAR WHEEL)	5 / 10	5 / 10	5 / 10	5 / 10
K. ESTIMATED BB HEIGHT	350 / 345	350 / 345	350 / 345	350 / 345



REGULATOR CX FRAME SPEC

REGULATOR CX	SPEC
REAR TRAVEL	150mm (Compatible with 160mm)
FRONT TRAVEL	160mm
WHEEL SIZE	Mixed Wheel Only
SIZES	SM, MD, LG, XL
COLORS	Salish Sea Blue, Glacier White
FORK AXLE TO CROWN (INCLUDING HS)	579mm
FORK OFFSET	44mm
REAR SHOCK SIZE	205mm x 60mm (Compatible with 205mm x 65mm)
SHOCK HARDWARE	Trunnion Mount Top / 30mm x 8mm Bottom
HEADSET (TOP)	ZS44
HEADSET (BOTTOM)	ZS56
CHAINLINE	55mm
REAR BRAKE MOUNT	180mm Post Mount (Max Rotor Size 223mm)
DERAILLEUR HANGER	SRAM USDH Spec
REAR AXLE	Transition 12mm x 148mm for SRAM UDH
CHAIN GUIDE	Transition Integrated Top Guide (Compatible with E13 Direct Mount B)
SEATPOST DIAMETER	31.6mm
SEAT CLAMP	37mm
MAX CHAINRING SIZE	34T
MAX TIRE SIZE	2.6"
REAR SHOCK PROGRESSION	27%

REGULATOR SX

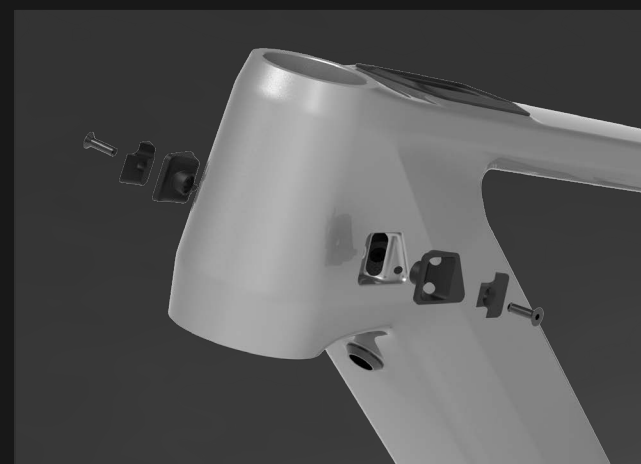
The Bosch Performance LineSX powered Regulator delivers 55nm of torque and 600 watts of peak power from the 400wh battery. This model utilizes an enclosed downtube to create a very sleek, clean looking eMTB that rides and looks more like a regular mountain bike. With a low weight and sporty geometry, the Regulator SX is all about fun. It powers you uphill, lap after lap, while remaining nimble to let you enjoy every inch of the trail. Jump every root, rail every turn and feel the flow of your favorite singletrack. We are excited to offer a model with a lightweight system that comes backed by the reputation of reliability and worldwide support of Bosch.



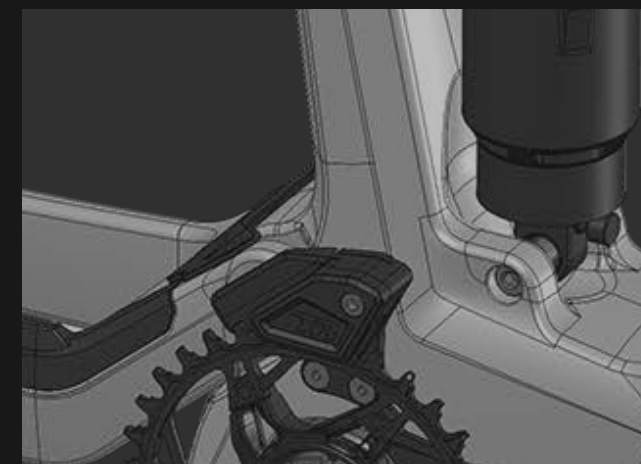
MADRONE GOLD



New Chainstay Protection Design



New Head Tube Cable Routing Ports



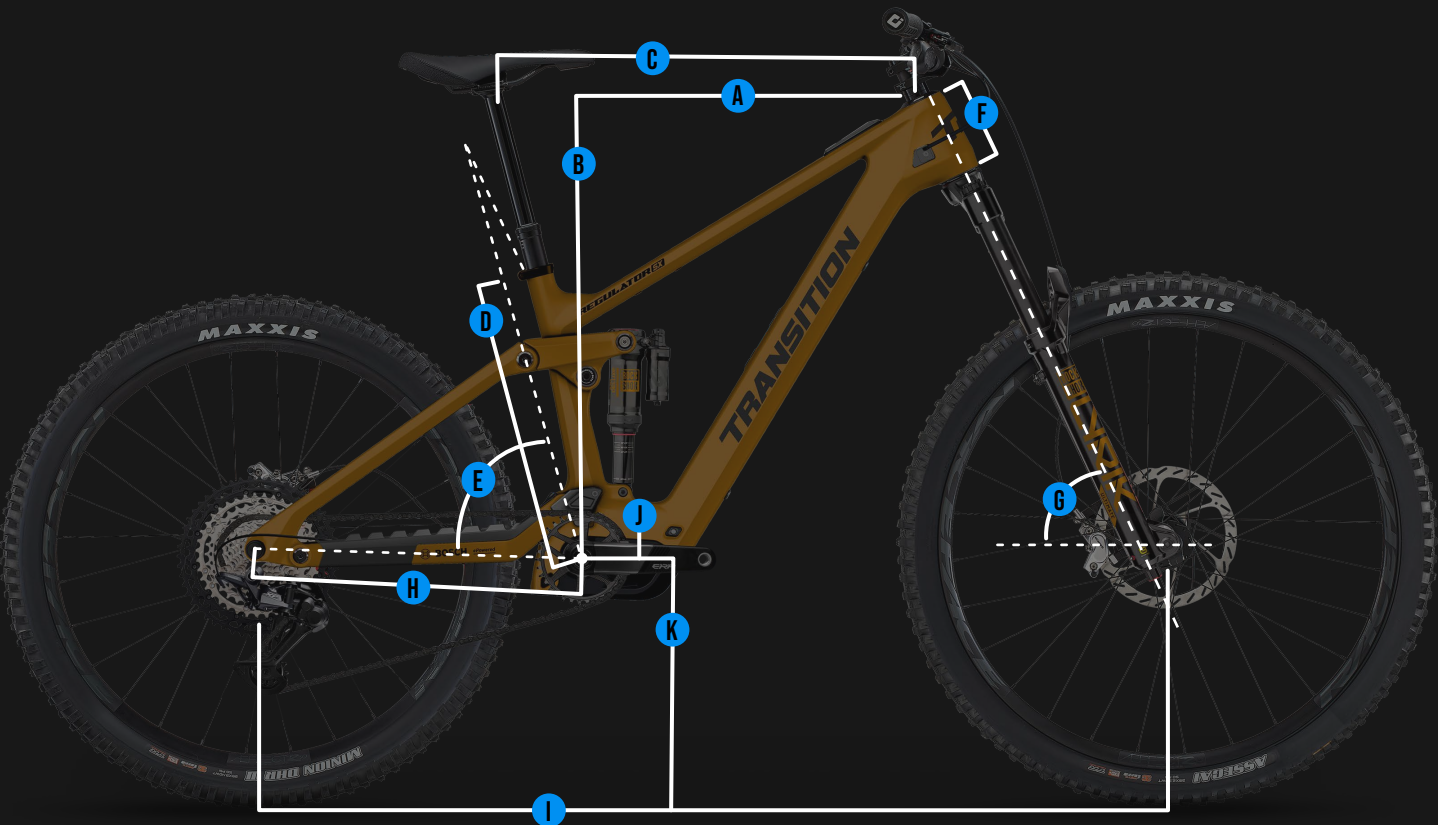
Integrated Transition top chain guide

REGULATOR SX BUILDS

Model	Regulator SX Deore	Regulator CX XT
Color Options	Stormshadow Grey, Madrone Gold	Stormshadow Grey, Madrone Gold
Frame	Regulator SX Carbon 150mm	Regulator SX Carbon 150mm
Wheel Size	Mixed	Mixed
Drive Unit	Bosch Performance Line SX (BDU31)	Bosch Performance Line SX (BDU31)
Battery	Bosch CompactTube (400wh)	Bosch CompactTube (400wh)
Display	Bosch System Controller	Bosch System Controller
Assist Switch	Bosch Wireless Mini Remote	Bosch Wireless Mini Remote
Rear Shock	RockShox SuperDeluxe Select (205x60mm)	RockShox SuperDeluxe Ultimate (205x60mm)
Fork	RockShox Lyrik Base (160mm)	RockShox Lyrik Ultimate (160mm)
Headset	FSA No.57E	FSA No.57E
Stem	RaceFace Aeffect R (40mm)	ANVL Swage (40mm)
Handlebar	RaceFace Chester 35 SM (780x20) MD/LG/XL (780x35)	OneUp Carbon SM (800x20) MD/LG/XL (800x35)
Grips	ODI Elite Flow Lock-On	ODI Elite Flow Lock-On
Saddle	SDG Bel Air V3	SDG Bel Air V3 LUX
Seatpost	SDG Tellis SM(150mm) MD(170mm) LG(200mm) XL(230mm)	OneUp Dropper Post SM(150mm) MD(190mm) LG(210mm) XL(240mm)
Brakes	Shimano Deore M6120 4 Piston	TRP DH-R EVO
Rotors	Shimano RT66 (203mm)	TRP R1 2.3 (203mm)
Shifter	Shimano Deore M6100 iSpec EV	Shimano XT M8100
Derailleur	Shimano Deore M6100 SGS 12sp	Shimano XT M8100 SGS 12sp
Cassette	Shimano Deore M6100 (10-51t)	Shimano XT M8100 (10-51t)
Chain	Shimano Deore M6100	Shimano XT M8100
Crank	RaceFace Aeffect R E-MTB (160mm)	RaceFace ERA Carbon E-MTB (160mm)
Chainring	E*Thirteen Helix Race Direct Mount (32t)	E*Thirteen Helix Race Direct Mount (32t)
Chainguide	Transition Integrated Top Guide	Transition Integrated Top Guide
Rims	WTB ST i30	DT Swiss XM 481
Spokes	Pillar Double Butted	DT Swiss Competition
Hubs	Novatech D791SB/D902SB	NEW DT Swiss
Front Tire	Maxxis Assegai 3C EXO/TR (2.5)	Maxxis Assegai 3C EXO+ (2.5)
Rear Tire	Maxxis Minion DHRII 3C EXO/TR (2.4)	Maxxis Minion DHRII 3C EXO+ (2.4)
Included	Bosch Charger, Tubeless Valves & Sealant	Bosch Charger, Tubeless Valves & Sealant

REGULATOR SX GEO

GEO	SM	MD	LG	XL
A. REACH	425	455	480	510
B. STACK	623	632	641	651
C. EFFECTIVE TT LENGTH	551	583	610	643
D. SEAT TUBE LENGTH	375	400	440	470
E. EFFECTIVE ST ANGLE	78.8	78.5	78.2	77.9
REFERENCE SEAT HEIGHT	600	660	720	780
ACTUAL ST ANGLE	75	75	75	75
ST OFFSET AT BB HEIGHT	41	41	41	41
F. HEAD TUBE LENGTH	105	115	125	135
G. HEAD TUBE ANGLE	64.5	64.5	64.5	64.5
H. CHAINSTAY LENGTH	442	442	448	448
I. WHEELBASE	1201	1235	1271	1305
J. BOTTOM BRACKET DROP (FRONT WHEEL)	25	25	25	25
BOTTOM BRACKET DROP (REAR WHEEL)	5	5	5	5
K. ESTIMATED BB HEIGHT	350	350	350	350



REGULATOR SX FRAME SPEC

REGULATOR SX	SPEC
REAR TRAVEL	150mm (Compatible with 160mm)
FRONT TRAVEL	160mm
WHEEL SIZE	Mixed Wheel Only
SIZES	SM, MD, LG, XL
COLORS	Stormshadow Grey, Madrone Gold
FORK AXLE TO CROWN (INCLUDING HS)	579mm
FORK OFFSET	44mm
REAR SHOCK SIZE	205mm x 60mm (Compatible with 205mm x 65mm)
SHOCK HARDWARE	Trunnion Mount Top / 30mm x 8mm Bottom
HEADSET (TOP)	ZS44
HEADSET (BOTTOM)	ZS56
CHAINLINE	55mm
REAR BRAKE MOUNT	180mm Post Mount (Max Rotor Size 223mm)
DERAILLEUR HANGER	SRAM USDH Spec
REAR AXLE	Transition 12mm x 148mm for SRAM UDH
CHAIN GUIDE	Transition Integrated Top Guide (Compatible with E13 Direct Mount B)
SEATPOST DIAMETER	31.6mm
SEAT CLAMP	37mm
MAX CHAINRING SIZE	34T
MAX TIRE SIZE	2.5"
REAR SHOCK PROGRESSION	27%

WHO WE ARE

We've been building bikes and friendships in the mountain bike community for almost 20 years. And while it seems like yesterday we were shipping bikes out of Kevin's basement, we are excited about where we have come and how we have grown as a company. We have always been about connecting with our customers and being an open and transparent company that welcomes all. We got into this for the friendships, the riding, and creating a unique place to work. Yeah, we're a little bigger now but the philosophy has never changed. We're a rider first company that strives to help people enjoy the sport in every way possible while remaining light hearted, fun and approachable at all times.

~ Transition Family





SALISH SEA BLUE

FEATURES:

- Sizes SM-XL
- Carbon frame, mixed wheel only
- Size specific CS Lengths (442mm SM/MD, 448mm LG/XL)
- 160mm fork travel, 150mm rear travel (160mm compatible with 65mm stroke shock)
- Bosch wireless 2 button Mini Remote
- Top tube mounted System Controller LED display
- New head tube cable routing ports
 - Compatible with 0,1 or 2 cables per side
 - Ideal routing for either right/rear or left/rear brake assemblies
- New chainstay protector design
 - Includes separate cable routing grommet or closed plug for wireless RD
- Integrated Transition top chain guide included
- Custom charge port cover w/ integrated range extender cable management
- Bosch Performance Line CX drive unit with 85nm of torque
- Powertube 625wh battery
 - Non-removable slide-in assembly for clean looks, minimum DT cross section, durability/robustness, lightest weight and least amount of noise.
- Geo-adjust chip at lower shock mount
- Ideal balance of weight, handling, and power with flexible battery capacity
 - 625wh battery
 - 250wh range extender compatible with MD-XL sizes (sold separately)



STORMSHADOW GREY

FEATURES:

- Sizes SM-XL
- Carbon frame, mixed wheel only
- Size specific CS Lengths (442mm SM/MD, 448mm LG/XL)
- 160mm fork travel, 150mm rear travel (160mm compatible with 65mm stroke shock)
- Top tube mounted System Controller LED display
- New head tube cable routing ports
 - Compatible with 0,1 or 2 cables per side
 - Ideal routing for either right/rear or left/rear brake assemblies
- New chainstay protector design
 - Includes separate cable routing grommet or closed plug for wireless RD
- Integrated Transition top chain guide included
- Custom charge port cover w/ integrated range extender cable management
- Bosch Performance Line SX BDU31 drive unit
 - 55nm torque, 600w peak power, 2.0kg drive unit weight
- Bosch CompactTube 400wh fixed battery
 - Uses new 20wh 21700 cells for highest energy density
- Does not have a geo-adjust chip. One position lower shock bolt only.
- Lightweight and handling are a priority with flexible battery capacity
 - 400wh battery
 - 250wh range extender compatible with MD-XL sizes (sold separately)